

# Comparative Study

*Jimmy Jr Sánchez Agosto*

A1

## **Introduction:**

This study will be analyzing the cultural values of protesting and embracing situations within the local communities of Lynn Casper and Kathe Kollwitz. While analyzing the aesthetic decisions taken by the artists in the layering process and medium. It will also cover the meaning and interaction of the community in response to the pieces.

# Kathe Kollwitz

*Mother with Child in Her Arms (Mutter mit Kind auf Dem Arm), 1916*

**Highlights** (Lighter shading) create a softer **texture** that represents the light, silky, smooth aspect of a child's hair

The shading creates a darker, more detailed oriented, rough feel to the image that contrasts with the mother's face giving the piece a center focus, and symmetrical balance.

The **line** usage in the child's shirt creates a rough, sketchy **texture**, which also shows the **movement** and **form** in the clothes giving the child a three dimensional shape.

The **focal point** is the baby's face, hands and the mother's face which creates a sense of motherly love and it emphasizes the deep connection between mother and child.



The shading and **line** usage shows **form** (depth), which materializes the feeling of the mother being an actual person. Kethe does this to create a connection between the viewer and herself, as she has experienced this too.

The **Highlights** show minimal shading, and a smoother **texture**

Lithograph 13 1/8 × 7 1/2 inches

# Kathe Kollwitz

*Memorial Sheet of Karl Liebknecht*  
(*Gedenkblatt für Karl Liebknecht*),  
1919-1920

14 5/8 × 20 7/16 in

37.1 × 51.9 cm

Woodcut heightened with white and  
black ink



- The rough **texture**, and **form** is seen in the faces of the mourning people.
- The **contrast** of dark and light creates a sense of loss and pain.
- The **asymmetrical balance** in the piece gives the bottom half the **dominance** to focus on the dead man being buried.
- The **motif** of the blue hue shows a murky mood which further emphasizes the depression of the crowd.

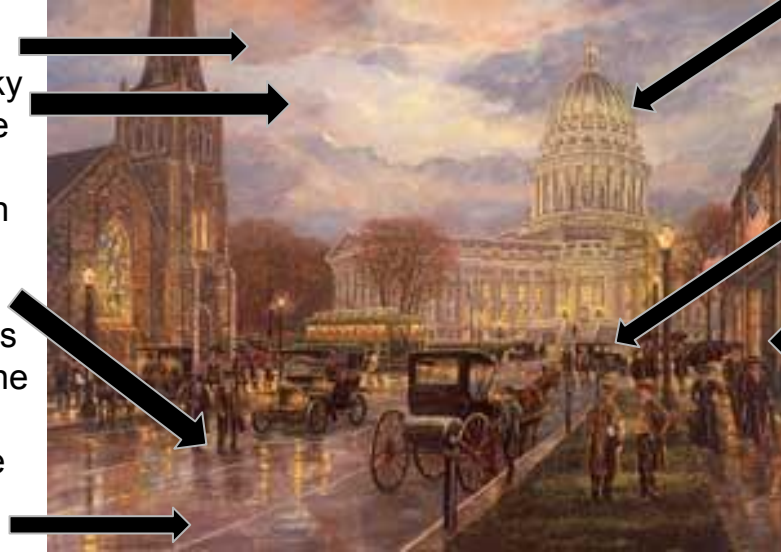
- The **proportion** is exaggerated, which is shown in the hands, heads and bodies of the people.

- There is a horrified look on the people's faces, which is the opposite of the restful look on the dead man's face.
- The **white lines** in the coats and faces are used to give detail and form to the people.
- This also, gives the piece a **Focal Point** to the dead man.
- The Spirit/Soul is shown leaving the body, by the lines carved above the head.

# Lynn Casper

*"Evening Reflections on the Capitol Square"*  
25" x 32" (On paper)

- The blending in the sky give a feathery, soft **texture**, and a form.
- The light, cool **colors** in the sky blend with the light pink to give a sense of transition of time.
- The **layering** and **blending** on the street road creates the illusion of having rain on the ground, and it also emphasizes the reflection of the lights on the falling rain.
- The **soft brushwork** gives the art piece a sketchy feeling all across, to reflect the vintage feeling.



- The **focal point** of the piece is in white house, as it is the brighter and lighter than the rest of the objects within the art piece, making the white house the center piece.
- The people, and the vintage cars are illustrated to emphasize the sense of simpler, calmer times.
- The **mood** is calming and tranquil. Which is created from the soft warm colors of the church, tree's, people, and the lights.

## Kathe Kollwitz

- Focuses on pain & grief
- Does not tend to use color
- Demonstrates the feelings of pain out of love, through the dramatization of facial expressions
- It's a carving and sketch
- It provokes a stronger connection to the viewer as it relates to them



## Lynn Caper

### Both

- The mood is loving and warm
- The line usage emphasizes form and detail
- Old feelings
- Focuses on the past, for its simplicity and soothing calmness
- Uses mainly warm colors
- The pieces tend to be colorful and bright
- Requires lots of layering
- Focuses on the colors to emphasize mood
- Uses soft sketchy brushwork
- Focuses on detail



# Analysis of Formal Qualities

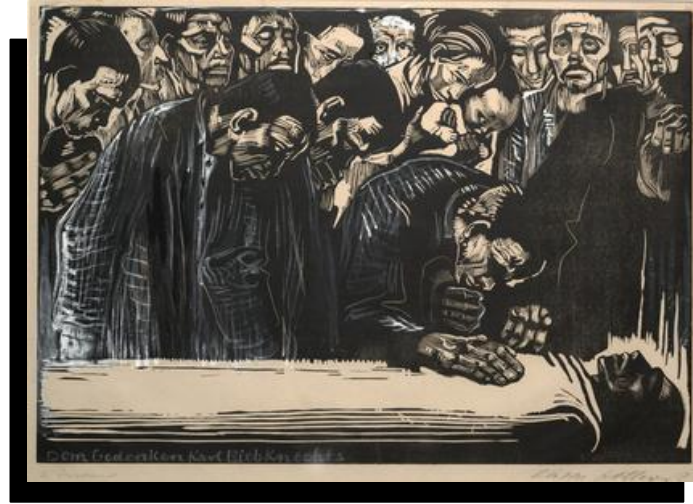
- The sketchy, soft, spaced lining creates the sense of safety, calm and peace that is being in a mother's arms. This is shown in the joyful look in the mother's face as she holds her child close.
- It seems to be a reunion of the mother and the child after a long period of time. This is seen in the joy depicted by the mother.
- The lack of hues creates a sense of peacefulness, also allowing the piece to focus on the mother's love, because color would distract the viewer from the focal point.



# Cultural Value/Connection of work

- As a Easter Prussian woman, who was a graphic artist for Germany. Most of Kathe's works were protest of the world wars, since she was strongly against them and wanted to focus on what the people needed to live in peace and harmony. Kollwitz's artworks were also personal as she expressed how she felt after losing her son to WWII.
- The piece "Mother with Child in Her Arms" is a memory of Kollwitz's, of when she had her son (Peter), and how she felt overly joyed. This touched many hearts although the Nazi's called Kollwitz's works as degrading to their beliefs. Meanwhile other mothers from germany felt the same as kollwitz causing many people to protest.





# Analysis of Formal Qualities

- The blue hue creates a general mood of sadness, which is reinforced by the dramatic facial expressions on the people. It is also emphasized by the overall dark look of the piece as it's the greater tone.
- The purpose of doing an overall gloomy feeling is to have a stronger connection to the viewer as the feeling of loss and pain is universal.
- The line usage within the piece is used to show depth, form and detail in the people's bodies. This allows the viewer to understand that the figures are positioned in rows as they are desperately trying to get a glimpse of the man.
- The exaggerated proportion shows a warp in their reality to further emphasize the feeling of depression.



*Memorial Sheet of Karl Liebknecht, 1920 By Kathe Kollwitz*

## Cultural Value/Connection of work

- The meaning behind the piece of ‘Memorial Sheet of Karl Liebknecht’ is that Liebknecht was a communist who led the revolt against the socialist group and was brutally assassinated. This piece is Kollwitz way of showing him respect as he was followed by the working class, who are standing there before him as they had placed all their faith in him. This caused many people to continue his legacy and they kept his ideology alive. This is a value as it's a depiction of the reaction of Liebknecht followers towards his death.



*"Evening Reflections on the Capitol Square" 1917 by Lynn Casper*

# Analysis of Formal Qualities



- The warm colors in the church, the sky, the tree's & the street creates a vintage feeling and it shows simplicity in a an older time.
- The bright colors of the lights show the livelihood of the people, and the calm time.
- The focal point of the piece is the state house as it's contrasted by the vast amount of colors surrounding it, making the state house stick out.
- The balance of the piece lies on the right side of the piece, meaning it's asymmetrical.

*"Evening Reflections on the Capitol Square" 1917 by Lynn Casper*

## Cultural Value/Connection of work



- The state house was newly built in Madison in the time that the piece was made, and the people were quite gracious of the new state house. Casper wanted to capture its essence and the beauty of the dome atop the state house and the people shopping at the neighboring building. Casper also captures the beauty of a late afternoon shower and the transition of the progressing day. People found this piece as an adequate depiction of the new Madison statehouse.



# Comparing Artistic styles



## Kathe Kollwitz

- Representative work (depicts the scene, almost like recording the event)
- Made sketches, and prints
- Depicts the World wars
- Did social protest artworks
- Used minimal colors
- Focused on the line work in her artworks

## Similar

- They depict their local situations
- They make works that are meant to be for the public eye

## Lynn Casper

- Tends to use acrylics
- Uses many bright warm colors
- Paints by extensive layering
- Captures the moments of her surroundings
- Her works tend to be happy, and usually involves a light source

# Comparing cultural significance

Kathe Kollwitz

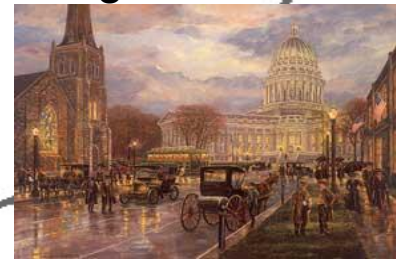
Lynn Casper

- Promotes a socialist viewpoint
- Protests against injustice and war
- Relates her own personal experience with her art works



- They make art for their communities to see
- They emphasize the community's values

- Captures the essence of a well known location within the community to explore its importance
- Enhances the feeling of joy and calm of being in a familiar location through painting with warm bright colors



# Comparing function and purpose

Kathe Kollwitz

- To reassure the people that hope is still alive.
- To show what love is, and what hate can cause.
- Shows the consequences of war
- Gives people the ability to protest

Both

- They give people the ability to experience a feeling that might be new to them

Lynn Caper

- To show the potential of the community
- To show the inner beauty of the city of Milwaukee
- Shows the pride of being part of Milwaukee
- Emphasizes the true beauty of the people





# Comparing Formal Qualities



## Kathe Kollwitz

- Uses minimal colors
- Uses lines to create depth
- Small scale use of color makes the color bolder and more meaningful
- Tend to be either dark or light
- Distorts figures to emphasize the sadness and pain of the figures
- Mood is depressing

## Similar

- The focal point is the human feeling/expression that is conveyed
- Avoids symmetrical balance
- Line work creates form and tone

## Lynn Casper

- Uses soft tone colors
- Uses blending to create texture
- Mood is calming and relaxed
- Layering of paints create the illusion of a wet road
- Asymmetrical balance
- Focal point is divided to the two edges
- Simple times emphasized by vintage items

# Comparing to Personal work

## *Mother with Child in Her Arms*

- Soft Shading
  - Shows a fabric soft Texture
  - Soft lines create lighter definitions
  - Uses Highlights
  - Shows Form
  - Explores the feeling of love
- Lithograph print  
It is a bright piece  
Mood is joy



## *The Lost Feelings*

- Line usage
- Symmetrical balance
- Explore human feelings/ emotion
- Use movement
- Both carry a symbolic figure that depicts their state of being

- Uses a full background
- Focal point is divided into a top and lower section
- Greater use of movement
- Explores the feeling of enclosure, and loneliness
- Block print
- Darker piece
- Mood is sad





# Comparing Cultural Context

Kathe Kollwitz

Kollwitz's *Mother with Child in Her Arms* was a peaceful protest of the World Wars during her stay in Germany. It conveys the warmth and love one experiences when one is around their dear loved ones, which allowed many people to protest against sending their child to war.

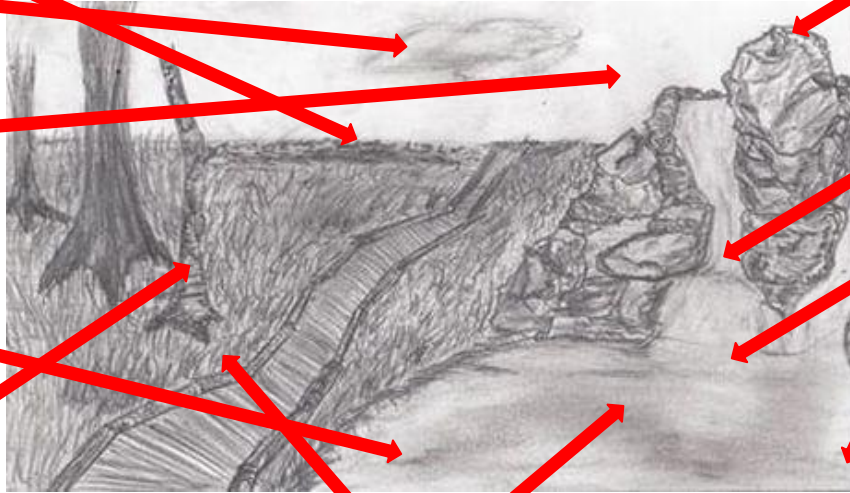


The Lost Feelings

I wanted to convey and depict the emotions of loneliness and detachment from the world as it is a frequent emotion that many of us can relate to experiencing. I did this because I was in a dark place and I needed to get it out of my system which many others can say the same. The purpose is to connect with the audience rather than to move the audience to a depressed state of being. This is achieved through the symbolism.

# Formal Qualities Of Personal Work

- Hatching for Grass
- Smooth shading for soft texture of cloud
- Clear sky to give contrast and to create a focal point (the Landscape)
- Shading in water creates mirror effect of the waterfall
- Cross hatching creates depth and form to the trees



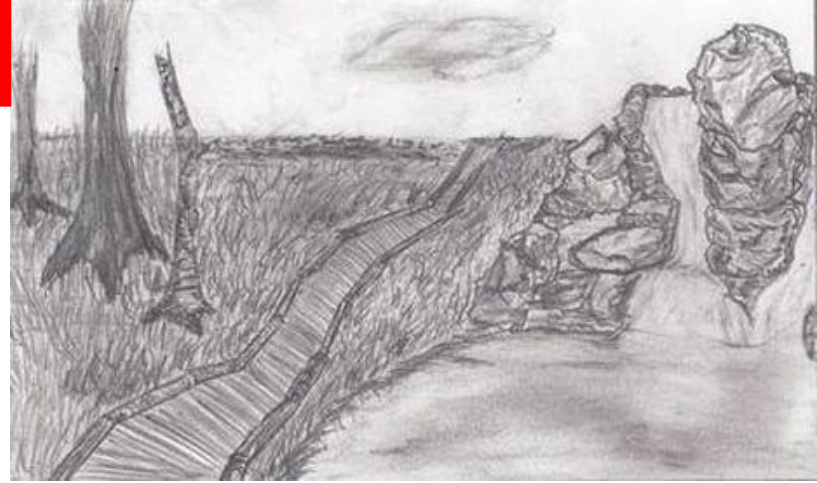
- Rough texture and form created with shading
- Water created by highlights and shading

Highlights

Shading

# Connection to Kollwitz & Casper

“In Celebration Of Freedom” is a detailed drawing of a clear, open, relaxing location that removes all worries from the viewer, inspired by Kollwitz and Casper in this piece. Casper gave me the idea of making a tranquil environment in which I would love to find myself in. While I was inspired by Kollwitz to leave it monochrome to give it more emphasis on the peace of older years, and I decided to implement Kollwitz line usage and Caspers blending/shading to create the illusion of form and texture.



# Connection to Kathe Kollwitz

Both “The Lost Feelings” and “Recycled” are inspired by Kathe Kollwitz as in they follow a similar theme that Kollwitz conveyed. The theme being extreme lonesomeness which is seen in Kollwitz’s “Woman with dead child” which expresses the core grief that Kollwitz felt when she lost her son, leaving her with great loneliness. Both of my artworks represent this through symbolism while Kollwitz was direct but they are all clear and effective at showing such pain.

